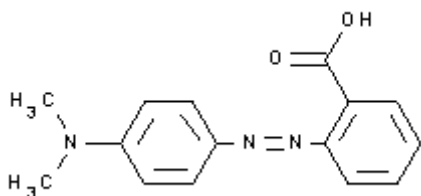
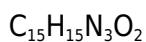
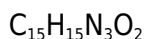




**PRODUCT CODE: 281618**

**Methyl Red solution 0.1% for volumetric analysis**

pH indicator 4,2 red; 6,2 yellow



M. = 269,31

TARIC 2934 99 90 90

**SYNONYMS:** 2-[4-(Dimethylamino)Phenylazo]Benzoic Acid, AcidRed 2

**PHYSICAL DATA:** liquid, Clear, Miscible with water D 20/4 0,87 • Flash P.:23 °C •

**BIBLIOGRAPHY:** Merck Index **12**, 6.199 13, 6.142 Conn's **IX** 98 • The Differentiation of Bacteria of the Colon-Aerogenes Family by the use of indicators ; W. M. Clark , H. A. Lubs , J.Infect. Dis. , 17 ,161-173 (1915) •

**HAZARDOUS:** VLA-ED (ethanol) 1.000 ppm 1.910 mg/m<sup>3</sup>



H: H226 •

P: P210 • P233 • P240 • P241 • P242 • P501 • P243 • P280 • P303+P361+P353 • P370+P378 • P403+P235 •

**TRANSPORT REGULATIONS:** UN: 1993 • ADR: 3/III • IMDG: 3/III • IATA: 3/III • PAX: 355 • CAO: 366 • (D/E) •

**WEIGHT/VOLUME INFORMATION:** 1l~0,870 kg 1kg~1,149 l

**COMPOSITION:**

Methyl Red  
Ethanol 70%

1 g  
1000 ml

**SPECIFICATIONS:**

Identity :  
Identity

passes test

**Maximum limit of impurities**

pH transition interval:

yellow

6,2

red

4,2

Sensitivity test

passes test

Ed.: 2 . Vig.: 03.06.2014 .

Prod.: 281618